

IANR All Hands Meeting



September 29, 2020

IN OUR GRIT, OUR GLORY™







THE CASNR

**CHANGE
MAKER**

COMPETITION

How Do You Want to Make a Difference in the World?

SPONSORED BY THE COLLEGE OF AGRICULTURAL SCIENCES AND NATURAL RESOURCES (CASNR)

**Here is your chance to share what you will tackle to
leave your mark on the world.**

Do you have an idea for making a difference in the world? Pitch us your idea in a 2-minute video. If your idea is selected you could earn a CASNR scholarship and have the chance to work directly with mentors on tackling your big idea.

LPS partners with UNL for newest focus program at Northeast



EARLY COLLEGE AND
CAREER STEM PROGRAM

Help light the **FEWS²**
Food, Energy, Water & Societal Systems









Perdue says innovation, collaboration key to agriculture's future

U.S. AG SECRETARY TOURS INNOVATION CAMPUS, PARTICIPATES IN PANEL DISCUSSION

University receives \$5 million gift to create program on water, climate and health



August 26, 2020 |

Alumni, News Release, UNL, UNMC





Omaha World-Herald

OPINION

Editorial: Nebraska State Fair's focus on youth is the right priority

The coronavirus has created big headaches for this year's Nebraska State Fair, but give fair leaders and supporters credit. They have the right priorities for the 2020 event in Grand Island. It will be a greatly slimmed down fair, starting Friday, that concentrates on youth participants.

Those children and teenagers — the future of Nebraska agriculture — have devoted enormous energy and attention to raising their animals for State Fair competition. The fair, in its 151st year, will not let them down. The fair's annual youth events also include competitions in skills such as cooking and identification of insects and grasses.



THRIVING INDEX

The [Thriving Index](#) is an interactive comparison tool for benchmarking, identifying and analyzing trends in rural Nebraska.



RURAL FELLOWS

Through [Rural Fellows](#) projects, students live and work in communities across Nebraska helping them solve problems and address important issues.



RURAL POLL

The annual [Rural Poll](#) surveys rural Nebraskans' asking questions about their perceptions on quality of life and policy issues.



SOURCELINK®

The [SourceLink® Nebraska](#) connects Nebraskans with programs and services for entrepreneurship, business, community and economic development.



COMMUNITY ENGAGEMENT



PEOPLE ATTRACTION & RETENTION



LEADERSHIP & COMMUNITY CAPACITY BUILDING



ECONOMY & ENTREPRENEURSHIP



PLACEMAKING



REGIONAL FOOD SYSTEMS

Welcome New Faculty Since January All Hands Meeting



Connor Biehler



Georgina Bingham



Brianna Buseman



Kaitlin Chapman



Tanya Crawford



Mary Drozd



Jordan Grummert Rasmussen



Christina Hoyt



Kara Kohel



Mary Moser



Welcome New Faculty Since January All Hands Meeting



Charles Chioma Nwaizu



Jeff Price



Bhanwar Lal Puniya



Sabrina Ruis



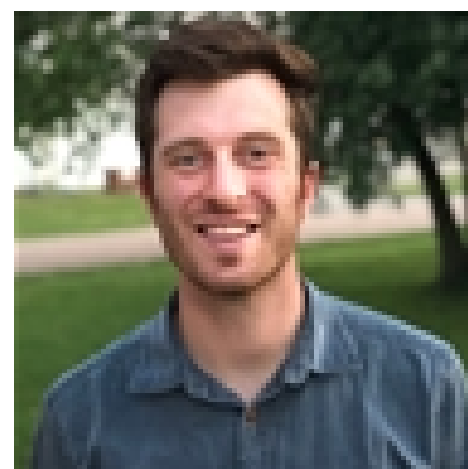
Hannah Sunderman



Stephanie Thorson



Jason Tuller



Daniel Uden



Ivan Jose Vechetti



Mark Vrtiska



Ruth Woiwode



Yijie Xiong



**Thank you to those who have retired.
Congratulations on an amazing run! We
appreciate you, your impacts, collegiality, and
friendship!**

**We wish you well and look forward to
celebrating when we can gather.**

Promoted/Tenured



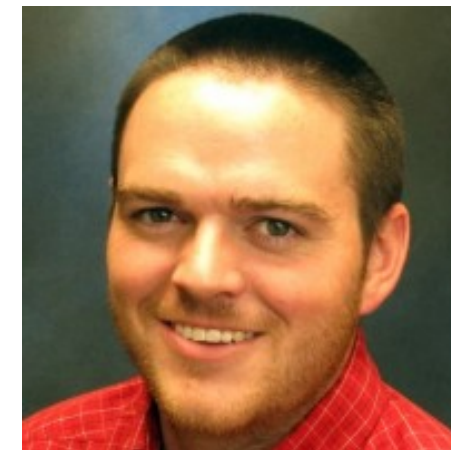
Angela Abts



Jiri Adamec



Tracy Anderson



Jack Arterburn



Sandra Barrera Fuentes



Ashley Benes



Megan Burda



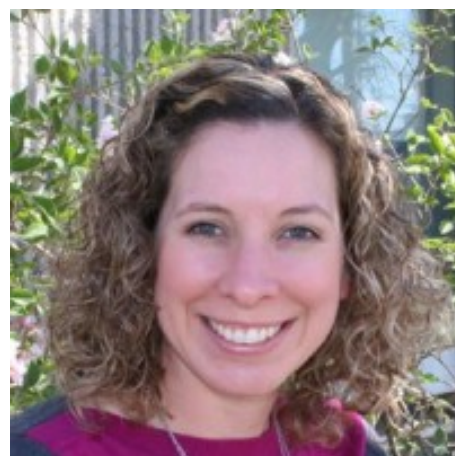
Daniel Ciobanu



Kimberly Clark



Kimberly Cook



Jaclynn Foged



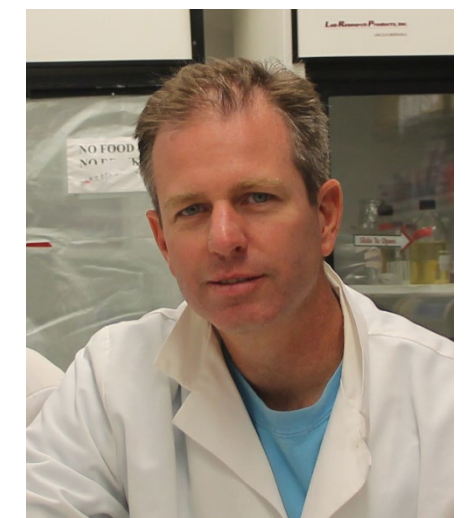
Hernan Garcia-Ruiz



Jessica Groskopf



Jennifer Hansen



Edward Harris



Promoted/Tenured



Rhonda Herrick



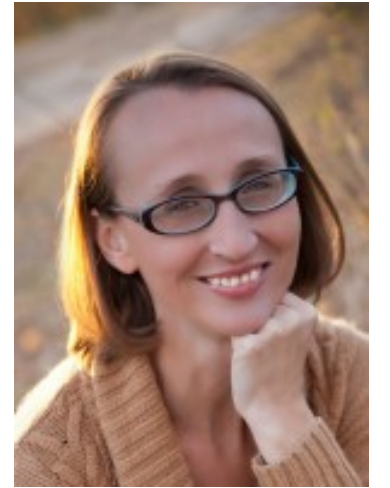
Terri James



Elizabeth Janning



John Kammermann



Lisa Karr



Kaytlyn Kennedy



Oleh Khalimonchuk



Elizabeth Exstrom



Eric Knoll



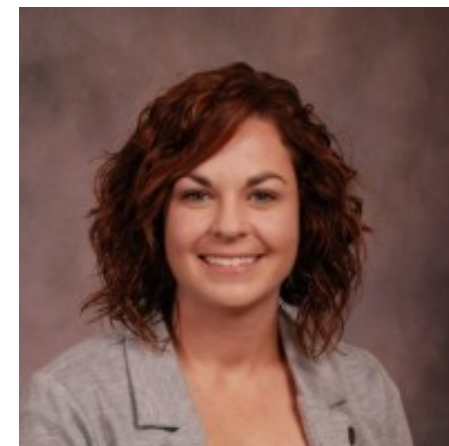
Julia Kreikemeier



Erin Laborie



David Lott



Lena Luck



Gina Matkin



Lia Nogueira-Rodriguez



Promoted/Tenured



Aaron Nygren



Jay Parsons



Jessica Petersen



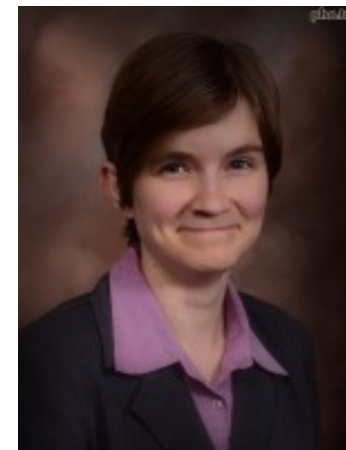
Julie Peterson



Christopher Proctor



Sarah Roberts



Rebecca Roston



Randy Saner



Paul Springer



Jackie Steffen



Rick Stowell



Mark Wilson



Jennifer Wood



Samuel Wortman



Dustin Yates



Andrew Zimbhoff



Marjorie Kostelnik

Professor, Agricultural Research Division
Distinguished Achievement in Agriculture
Gamma Sigma Delta

James Schnable

Associate Professor, Agronomy & Horticulture
ASPB Early Career Award
American Society of Plant Biologists
NAPPN Early Career Award
North American Plant Phenotyping Network

Chris Calkins

Professor, Animal Science
Meat Industry Hall of Fame – 2019 Class
Meat Industry Hall of Fame Board of Trustees

Edgar Cahoon

Professor, Biochemistry
Fellow
American Association for the Advancement of Science

Thomas Clemente

Professor, Agronomy & Horticulture
AAAS Fellow
American Association for the Advancement of Science

Paul Black

Professor, Biochemistry
2020 Award for Exemplary Contributions to Education
American Society for Biochemistry and Molecular Biology

Tami Brown-Brandl

Biological Systems Engineering
ASABE Fellow
ASABE

Joe Louis

Associate Professor, Entomology
Early Career Innovation Award
Entomological Society of America
NSF Faculty Early Career Development (CAREER) Award
National Science Foundation



Lisa Franzen-Castle

Associate Professor, Nutrition & Health Sciences

Early Professional Achievement Award

Society for Nutrition Educator and Behavior

Angie Pannier

Professor, Biological Systems Engineering

Presidential Early Career Award for Scientist and Engineers

U.S. White House Office of Science and Technology Policy

Yan Xia

Professor, Child, Youth and Family Studies

Completion Certificate 2018-2019 Fulbright

**Distinguished Chair in Social Sciences, China, Bureau
of Education and Cultural Affairs**

Meat Industry Hall of Fame – 2019 Class

U.S. Department of the State and Fulbright Scholarship
Board

Cody Creech

Assistant Professor, Panhandle Research & Extension Center

2019 CSSA Early Career Award

Crop Science Society of America

Deepak Keshwani

Associate Professor, Biological Systems Engineering

2019 A.W. Farrell Young Educator Award

American Society of Agricultural and Biological
Engineers (ASABE)

Andrew Benson

Professor, Food Science & Technology

Fellow, American Academy of Microbiology

American Society of Microbiology

Janos Zempleni

Professor, , Nutrition & Health Sciences

Osborne and Mendel Award, 2019

American Society for Nutrition

Jack Whittier

Professor, Panhandle Research & Extension Center

ASAS Fellow Award

American Society of Animal Science



2019 Awards at a glance:

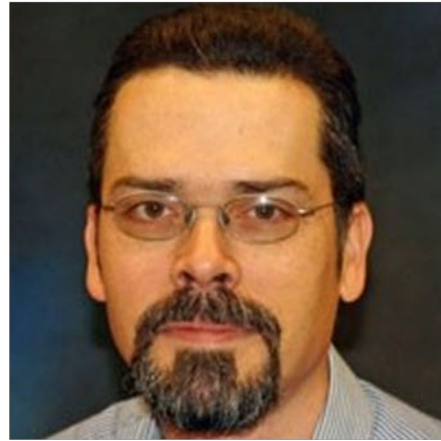
- Best Paper – 3
- Best Poster/Presentation Award – 2
- Career Award – 11
- Extension Program Award – 24
- Fellow – 6
- Fulbright -1
- Other Presentation Award – 3
- Other Publication Award – 7
- Research Award – 6
- Service Award – 7
- Standards Development Award – 1
- Teaching Award - 1



New Leaders Since January All Hands Meeting



Don Becker
Biochemistry



Jeff Bradshaw
PHREEC, Interim



Tom Burkey
CASNR



Cheryl Burkhart-Kriesel
Rural Prosperity NEB



Larry Gossen
NCTA



Scott McVey
SVMBS



Michael Merten
CYAF



Jen Mize Nelson
NVC, Interim



Mark Svoboda
NDMC



Dave Varner
NE Extension, Interim



Karrie Weber
UG Microbiology Program



Total Positive Cases

44,578

People Tested: Not Detected

407,979

*Excludes inconclusives and out of state residents

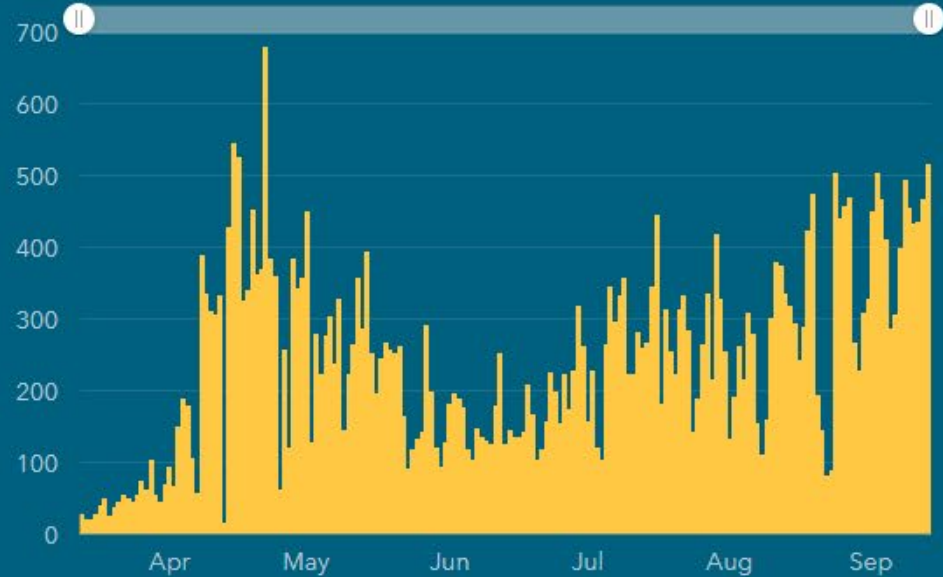
People Tested

452,862

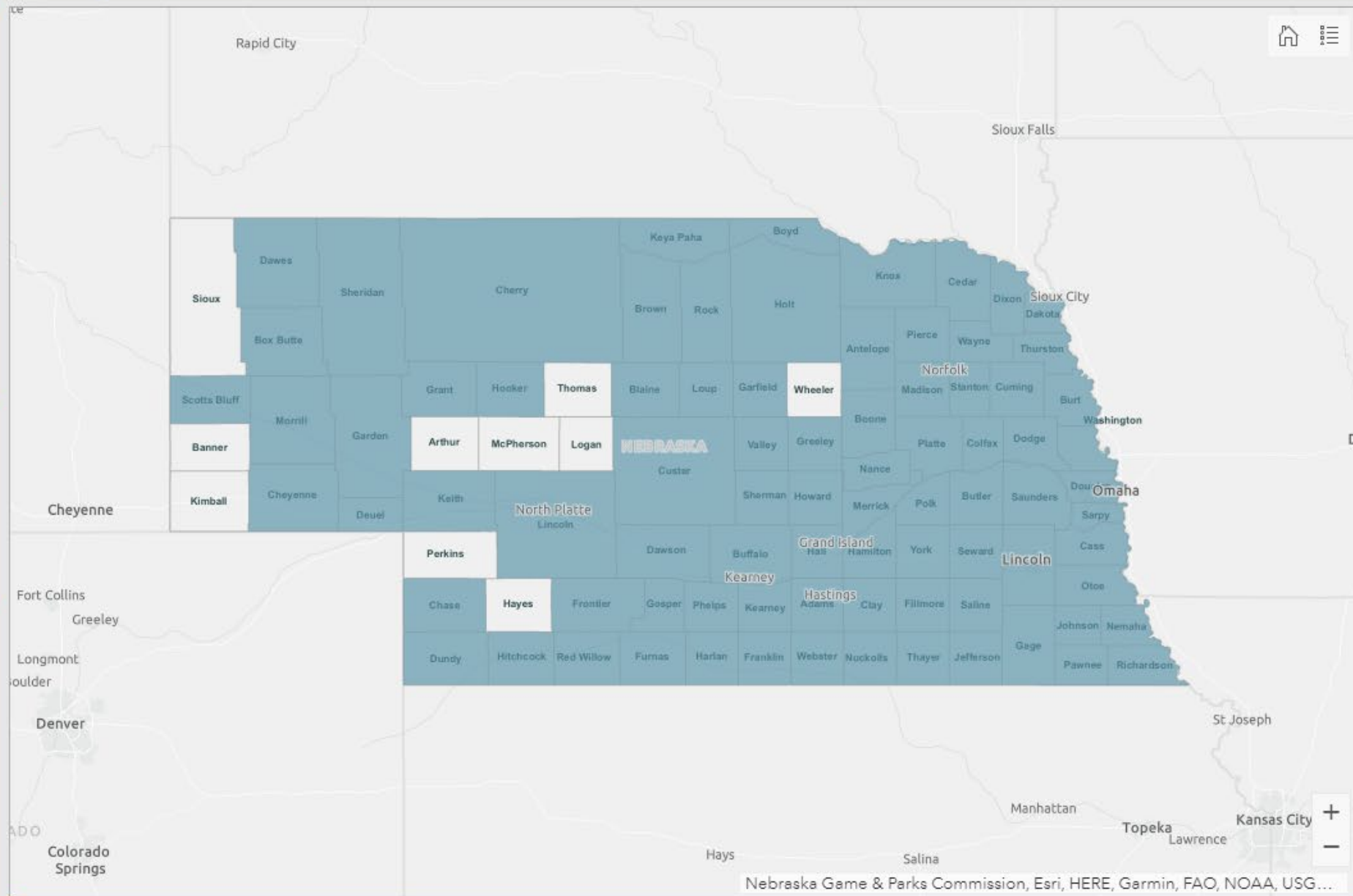
Total Tests

611,080

New positive cases by date results were received



% Positive | Positives by Date | Total Positives | Tests by Date | Total Tests



Number of positive tests by county in the last 14 days

- 1,602 Douglas
- 1,130 Lancaster
- 509 Sarpy
- 198 Buffalo
- 187 Dodge
- 150 Platte
- 145 Saunders
- 129 Dakota
- 102 Madison
- 95 Hall
- 89 Adams
- 85 Gage
- 80 Wayne
- 80 Washington
- 77 Knox
- 69 Saline
- 47 Cuming
- 47 Cass
- 45 Holt
- 44 Lincoln
- 42 Seward
- 42 Colfax
- 40 Boone

Last Updated: 9/28/2020, 6:15 PM CDT

Last 14 Day Positive Cases | Total Positive Cases | Hospital Capacity | Positive Cases | Hospitalized Cases | Recoveries | Deaths | Race | Ethnicity | Turn Around Time | About the Data

Contact Nebraska Department of Health and Human Services (DHHS)

<http://dhhs.ne.gov/coronavirus>

Information Line: (402) 552-6645

Data are representative of Nebraska residents, are provisional and data reported by the local health department should be considered the most up to date.

NEBRASKA

Good Life. Great Mission.

DEPT. OF HEALTH AND HUMAN SERVICES



COVID-19: NEBRASKA RESPONDS



Home

[Latest Updates](#)

[Task Force and Committees](#)

[Guiding Framework](#)

Health & Safety

[Quarantine Information for Students](#)

[Group Quarantine Guidelines](#)

[Isolation Guide for Students](#)

Testing, Reporting & Contact Tracing

[Free On-Campus Testing](#)

[Positive Test Reporting](#)

[Contact Tracing](#)

[COVID-19 Dashboard](#)

Information For ...

[Students](#)

[Instructors / Researchers](#)

[Employees](#)

[Prospective Students](#)

Facilities & Events

FAQ / Contact Us



PROTECT YOURSELF AND OUR HUSKER COMMUNITY

We're Cornhusker Committed to wearing a mask, washing our hands, practicing social distancing, avoiding large groups, and getting tested.

[REGISTER FOR A TEST](#)

[REPORT POSITIVE TEST](#)



Pause for questions from the Zoom Chat





[Nebraska](#) › [IANR Home](#) › [Faculty & Staff Resources](#) › Diversity and Inclusion at IANR

Diversity and Inclusion at IANR

IANR's Commitment to Diversity and Inclusion

We value the contributions of each person and strive to make each interaction matter. Our strategic direction related to diversity and inclusion is closely aligned with and contributes to the [University of Nebraska-Lincoln's N2025 strategic plan](#). We are committed to engaging in practices that demonstrate the value of diversity and inclusive excellence.

We recognize that when we value diversity through inclusive practices the results are creativity, innovation and a sense of belonging—precisely what is needed to tackle the grand challenges being addressed by the more than 1,900 faculty and staff and more than 3,100 students of the Institute.

KEYS TO CREATING AN INCLUSIVE AND WELCOMING IANR

- [Be intentional](#)
- [Be accountable](#)
- [Be reflective](#)

EMAIL US

IANR Diversity and Inclusion Advisory Group



Simanti Banerjee
Agricultural Economics



Michael Bergland-Riese
NE Extension



Brytany Gama
ALEC



Jackie Guzman
NE Extension EZ1



Holly Hatton-Bowers
CYAF



Angi Heller
Engagement Zone 8



Lisa Karr
Animal Science



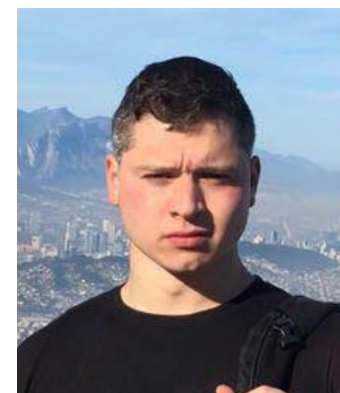
Martha Mamo
Agronomy & Horticulture



Bobby Skates
WCREC



Ashley Stengel,
Complex Biosystems



David Velazco
Animal Science



Ana Maria Velez
Entomology

First meeting:
Friday, Oct. 9,
2-3:30 p.m





Minorities in Agriculture, Natural Resources, and Related Sciences

Our Mission at MANRRS is to promote academic and professional advancement by empowering minorities in agriculture, natural resources, and related sciences.



JOIN US!

MINORITIES IN
AGRICULTURE, NATURAL
RESOURCES AND
RELATED SCIENCES

**SEPT. 24
2020 @ 11AM**

INFORMATIONAL MEETING
VIA ZOOM
SCAN THE QR CODE TO JOIN!



QUESTIONS? EMAIL:
MANRRS.UNL@YAHOO.COM

We Are Nebraska

It's happening! Don't miss a

REVOLUTIONARY THEATRE EXPERIENCE

with the WE ARE NEBRASKA interns.

See the next generation of diverse and inclusive leaders tell their **stories that must be told**—along with music, dance and video expressions!

BOLD, EMOTIONAL & ENTERTAINING

Wed., Oct. 7 | Showtimes at 4:30pm & 7:30pm!

Lied Center for Performing Arts, 12th & R Streets

Free and open to the public | Doors open 30 minutes prior to each show

Seating is first come, first serve | Single seating and distanced

Must wear cloth mask | Sanitizer Provided



Sponsored by Hixson-Lied College of Fine and Performing Arts, Student Affairs, Diversity and Inclusion, College of Business, College of Engineering, College of Law, Office of Research & Economic Development, Institute of Agriculture and Natural Resources, and College of Agricultural Sciences and Natural Resources

IANR Staff Liaison Council



Christina Franklin



Pam Joern



Sarah Plautz



Tai Pleasant



Angela Rushman



Becky Carter



Marissa Kemp



Casey Lundberg



Tracy Zimmerman





Pause for questions from the Zoom Chat



NU to cut \$43M in response to COVID-19; Carter outlines 3-year budget plan

Chris Dunker Jun 19, 2020 Updated Aug 27, 2020



The University of Nebraska will seek to cut \$43 million from its budget over the next three years as it aims to steady a turbulent financial situation caused by the coronavirus pandemic.

President Ted Carter said the university system will enact “significant permanent cuts” to NU’s state-aided budget, which is funded through state appropriations and tuition revenue, to address a potential 10% drop in the number of students enrolled this year.

That’s less than the 15% enrollment decline many other colleges and universities are anticipating but would still result in a dramatic loss of revenue.

“I’m cautiously optimistic,” Carter said at a news conference Friday ahead of the release of next week’s NU Board of Regents’ agenda. Regents will meet remotely on June 26.

NU already absorbed a \$50 million loss this year after COVID-19 forced the university system to close its campuses in Lincoln, Omaha and Kearney and refund some money to students.



NU SYSTEM APPROVED STATE-AIDED BUDGET

- \$43M university-wide state-aided reduction in next three fiscal years
- Equates to 4.3% overall
 - UNL - 5.5 percent (before adding carry-forward deficit)
 - UNO - 3.9 percent
 - UNK - 3.9 percent
 - UNMC - 2.9 percent
- No salary increases in FY21 for non-union campuses
- Salary “tools” as approved by BOR (voluntary FTE reduction, furlough)
- NUCredits elimination (over \$130K)



NU SYSTEM APPROVED BUDGET

Assumptions:

- Continued funding from state in second year of biennium (FY21) and 2% increases in FY22 and FY23
- Conservative enrollment projections for all campuses
- Salary increases of 1.5% and 3% in FY22 and FY23 for non-union campuses.
- No tuition increases through FY23 unless State funding changes
- Funding for Nebraska Promise and President and Chancellor Strategic Priorities
- Modest increases in general operations and utilities in FY22 and FY23.



UNL BUDGET

5.5% calculated reduction over 3-year period (\$25.8M)

Add:

- Carry-forward deficit of (\$9.96M)
- New expenses (\$2.54M) (P&T, insurance, O&M, etc.)

Total UNL budget adjustment required (\$38.3M) or 8.2%



University of Nebraska-Lincoln
State-Aided Operating Budget - Calculated Budget Reductions
FY 2021 thru FY 2022, FY2023

VC	FY21 Target Reduction	FY22 Target Reduction ²	FY23 Target Reduction ²	3-Year Cumulative Reduction	<i>Estimated</i> 3-Year %
<i>UNL Annual Deficit</i>	<i>\$ 15,708,995</i>	<i>\$ 8,797,661</i>	<i>\$ 13,747,528</i>	<i>\$ 38,254,184</i>	
<i>Percent Annual Reduction Required</i>	<i>3.4%</i>	<i>1.9%</i>	<i>3.0%</i>	<i>8.2%</i>	
Chancellor Base Budget ¹ <i>University Fixed Costs</i>					
Chancellor Allocable Budget/Reduction	\$290,060	\$162,445	\$253,842	\$706,346	8.2%
EVC CAO ³	\$9,960,010	\$4,720,512	\$7,376,434	\$22,056,955	9.1%
VCIANR	\$ 3,563,463	\$2,555,431	\$3,993,204	\$10,112,097	7.7%
VCORED	\$ 137,327	\$98,480	\$153,889	\$389,696	7.7%
VCBF	\$ 1,733,010	\$1,242,776	\$1,942,005	\$4,917,791	7.7%
VCSA	\$ 25,125	\$18,018	\$28,155	\$71,297	7.7%
Total	\$15,708,995	\$8,797,661	\$13,747,528	\$38,254,184	8.2%

CALCULATED BUDGET REDUCTIONS



High-level Summary - Proposed IANR Reduction Plan to Chancellor

IANR Reduction Target = **\$10,112,097**

FY21 (\$3,563,463) / **FY22** (\$2,555,430) / **FY23** (\$3,993,204)

- 10% Administrative Reduction – VC IANR, CASNR, ARD, Extension - **~\$1.9M** – elimination of 6 administrative positions and reduction of operating budgets
- Elimination of open lines and conversion to non-state funds - **~\$6.3M**
 - Faculty positions (all types) - ~\$3.5M – vacant and projected attrition
 - Vacant staff positions **proposed by units** - ~\$1.1M
 - Research support staff **proposed by units** – elimination of open lines and transitioning of others to non-state sources - ~\$1.7M
- Program Reduction/Realignment - **~\$0.6M** / Proposed elimination of the ARD and Extension state-aided support for the Department of Textiles, Merchandizing, Fashion Design (TMFD) / Proposed elimination of the CASNR Hospitality Restaurant Tourism Management (HRTM) degree program
- Reduce use of student remissions by 10% - **~\$1.3M** / replace remissions with funded scholarships, fellowships, and grant funding



APC Budget Hearings - Phase 2 Reductions

The [Academic Planning Committee](#) (APC) announces that hearings will be held to provide the Committee with additional information on the programs being proposed for elimination or reduction as part of the FY2021 budget reduction process. The [Phase 2 reduction proposals](#) were announced to the campus on September 3, 2020, and the hearings are scheduled as follows:

2021 Phase Two Budget Hearings

DATE	TOPIC	REGISTRATION DEADLINE
October 7, 2020	Elimination of the undergraduate Dance Program within the Glenn Korff School of Music in the Hixson-Lied College of Fine and Performing Arts	12:00 Noon (CDT), October 5, 2020
October 14, 2020	Elimination of the Department of Textiles, Merchandising and Fashion Design within the College of Education and Human Sciences	12:00 Noon (CDT), October 12, 2020
October 21, 2020	General hearing on any proposed Phase 2 budget reduction including the elimination of the Masters in Athletics Administration in the College of Business and the Hospitality Management Program in IANR	12:00 Noon (CDT), October 19, 2020

Each hearing will begin at 3:00 p.m. and will be held virtually via Zoom.

To Present Testimony at the Scheduled Budget Hearing: Registration of Intent to Appear

In order to coordinate the hearing schedule, the APC requires that all individuals wishing to respond to the proposals in person are required to register their intent to appear at <https://go.unl.edu/hearing>. This





Pause for questions from the Zoom Chat



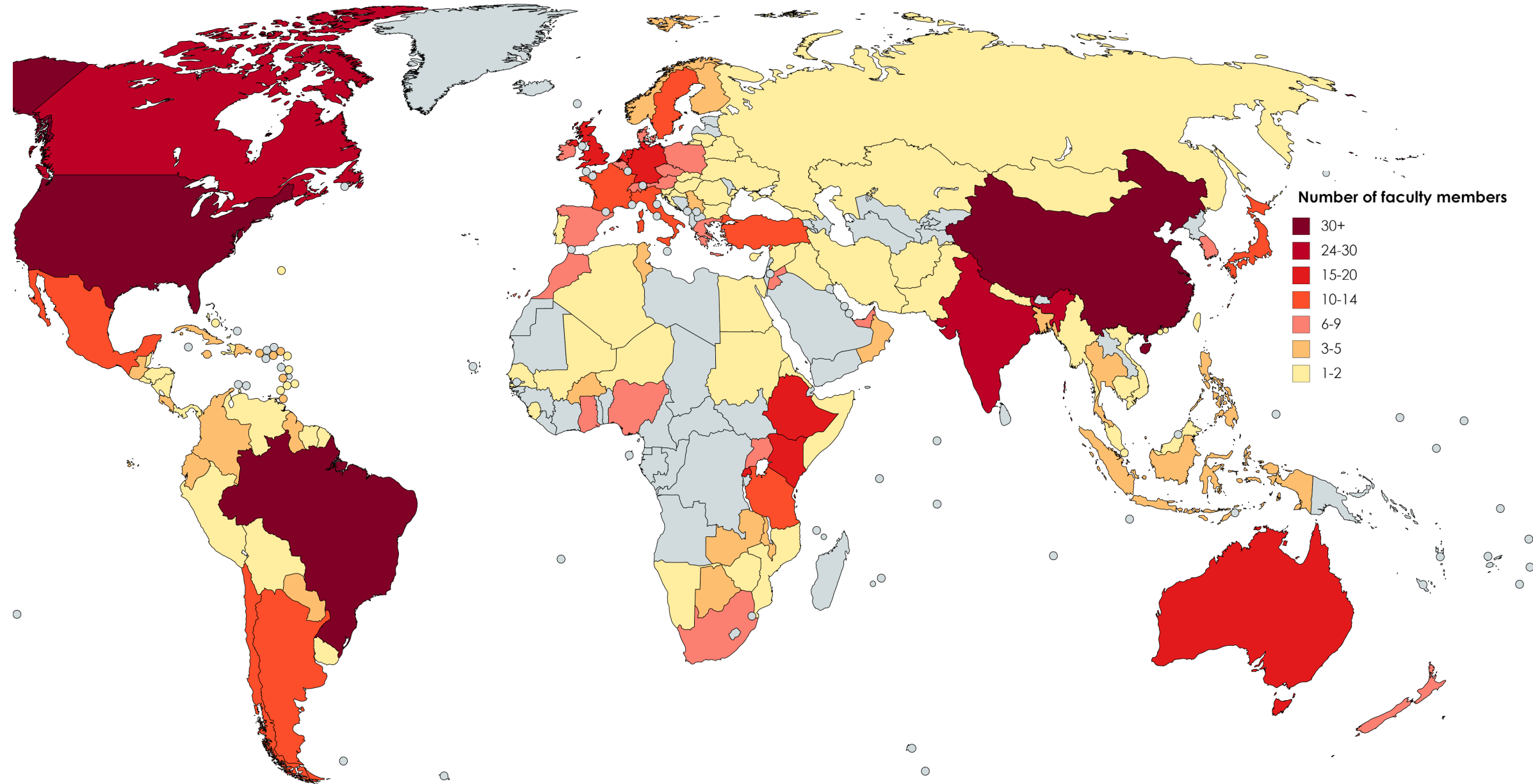
IANR's Global Engagement in Research Innovation, Education & Engagement (2019-2020)

177 Faculty (~50%)
engaged in
123 countries

25 Countries with
affiliate faculty/fellows

475+ International
students from
60+ countries

12 Education abroad
programs



Created with mapchart.net



Research, Discovery & Innovation

Education, Outreach & Engagement



Archie Clutter



Liana Calegare



Jon Kerrigan



Tiffany Heng-Moss



Sylvana Airan



Tala Awada



Brianne Wolf



Kaitlyn Waller



Chris Ebbers



Peter McCormick



Jill O'Donnell

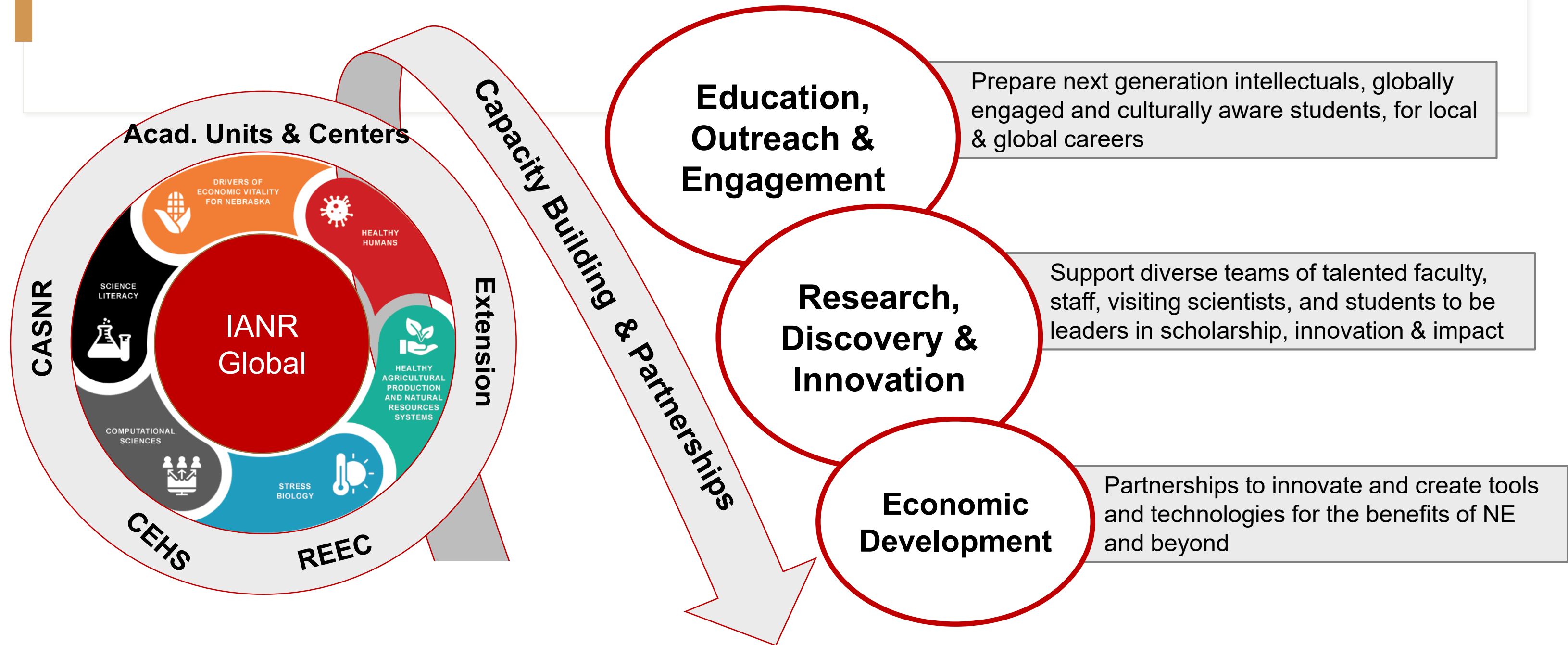


Rich Bischoff



Dave Varner

Amplify and Augment Partnerships to Ensure Resilient Food Systems and a Healthy Global Future



Get in touch!

Liana Calegare: lcalegare2@unl.edu

Jon Kerrigan: jon.kerrigan@unl.edu

Brianne Wolf: bwolf4@unl.edu

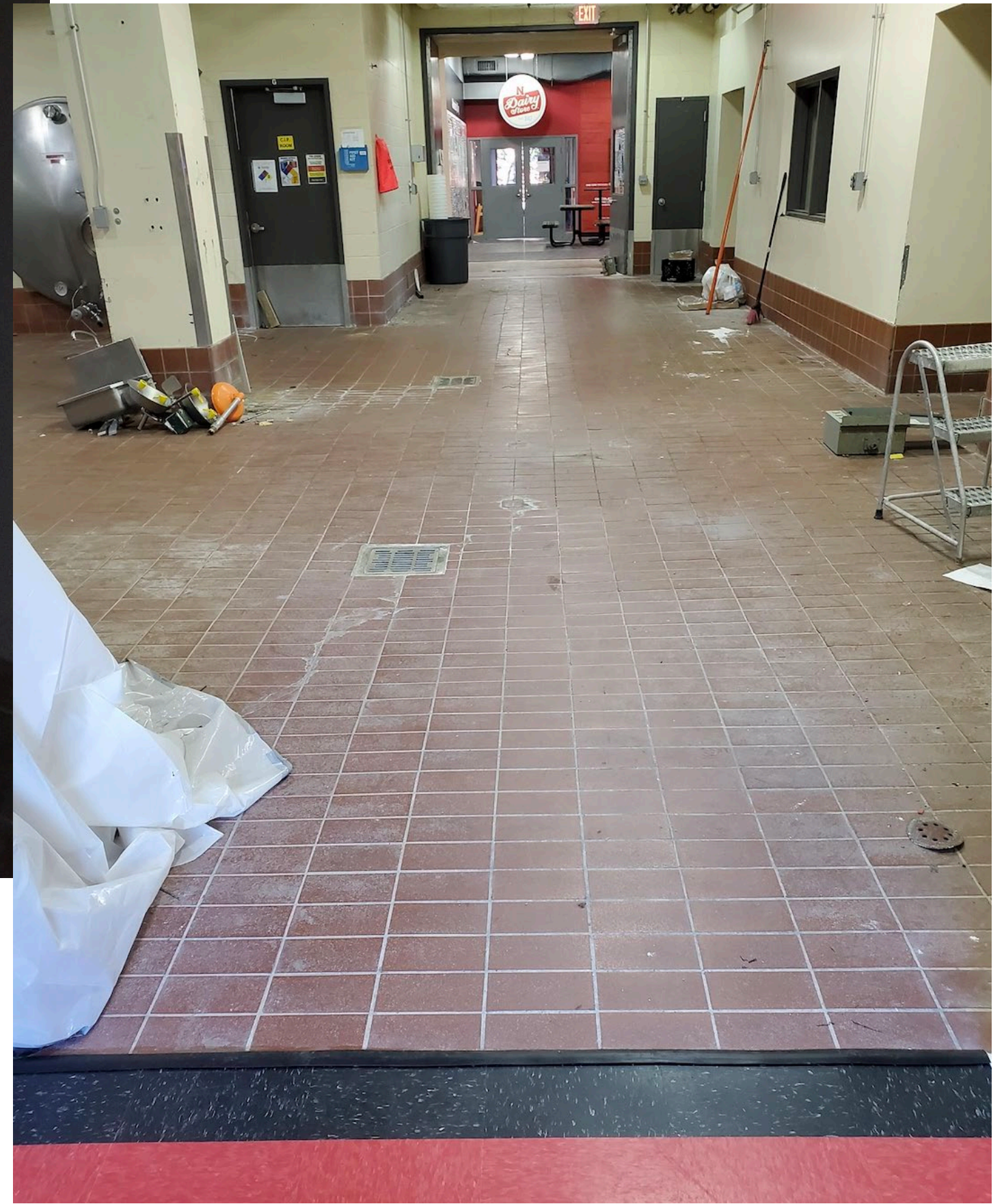
ianrglobal@unl.edu

<https://ianr.unl.edu/global-engagement>

Wake-Dance

Artist – John Raymond Henry





East Campus Collaboration Space:
Coming this fall!

A wide-angle landscape photograph capturing a sunset over a vast, calm body of water. The sun is positioned low on the horizon, creating a bright orange and yellow glow that reflects on the water's surface. The sky is filled with large, dark, textured clouds, some of which are illuminated from below by the setting sun, giving them a purple and blue hue. The foreground shows dark silhouettes of trees and bushes, suggesting the viewer is looking across the water from a slightly elevated position. The overall mood is serene and atmospheric.

On the horizon...



- NU's BOR has authorized IANR to move forward with formal planning and construction of the Feed Yard Innovation Center at ENREC - ~\$4.9M.
- Nebraska 'Smart Farms' into the next phase.
- *'The 2017 Economic Impact of the Nebraska Agricultural Production Complex'* released on 01 OCT.
- [Rural Prosperity Nebraska](#) – next chapter of NU's commitment to the success of rural people and communities – [SourceLink](#) launched, [Thriving Index 2.0](#) released, actively recruiting 200 [Rural Fellows](#) and 100 local communities for Summer 2021, and will soon be launching search for new director and Extension Program Leader within coming weeks.



- External review team is conducting review of IANR's network of Greater Nebraska locations and our Research, Extension, and Education Centers – exit session scheduled for 08 OCT.
- Update to 'An Atlas of the Sand Hills' commissioned – targeted release 2023 – coincides with IANR's 50th celebration.
- Searches for permanent Dean/Director of Nebraska Extension and the Director for the Panhandle Research, Extension, and Education Center slated to launch in first part of 2021.
- CYT Library at the Dinsdale Family Learning Commons to open in March 2021 – Miller Hall to be decommissioned and porch to ECU and landscaping to be completed.

Zoom Chat Follow Up

